

**WERKS®**

## Tool Holders



Using slotted tool holders

### Using perforated tool holders

#### Usage

Designed for use with our range of WERKS Perforated and Slotted Louvre panel products such as Cabinets, Shadow boards, Tool Trolleys and Cleaning Stations.

#### Features & Benefits

- Compatible with all WERKS Panels, Cabinets and Partition Walls
- There is a comprehensive range of hanging tools for most applications
- Available individually or in packs of 10, 28 or 40 mixed pieces.
- Tool holders with the little red screw are suitable for Perforated Panels; tool holders without the red screws are suitable for slotted louvre panels

#### Specifications

##### Model 12500172 -

Pack of 28 assorted tool holders (suit perforated panels)

##### Model 12500173 -

Pack of 40 assorted tool holders (suit perforated panels)

##### Model 12500168 -

Pack of 10 assorted tool holders (suit perforated panels)

*\*To purchase individual tool holders, please browse through the remainder of this information brochure for product codes and images.*





**ANGLE HOOK END 6mm Diameter**

Length	Model
50mm	- 12500175
100mm	- 12500176
150mm	- 12500177
200mm	- 12500178



**STRAIGHT PIN 6mm Diameter**

Length	Model
50mm	- 12500186
100mm	- 12500187
150mm	- 12500188



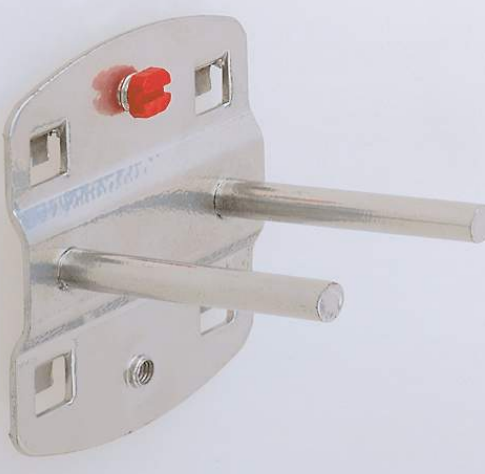
**VERTICAL HOOK 6mm Diameter**

Length	Model
35mm	- 12500179
75mm	- 12500180
125mm	- 12500181



**DOUBLE VERTICAL HOOK  
6mm Diameter**

Length	Model
35mm	- 12500179
50mm	- 12500180
75mm	- 12500181
150mm	- 12500182



**DOUBLE STRAIGHT PIN 6mm  
Diameter**

Length	Model
50mm	- 12500189
100mm	- 12500190
150mm	- 12500191



**ANGLED HOOK 6mm Diameter**

Length	Model
14/40mm	- 12500192



**PLIERS HOLDER 20MM Diameter**

Length	Model
35mmW -	12500193
55mmW -	12500194
75mmW -	12500195



**ROUNDED HOLDER 25mmW**

Length	Model
65mm -	12500196



**TOOL HOLDER**

Diameter	Model
40mm -	12500197
60mm -	12500198
80mm -	12500199



**PIPE BRACKET Length 35mm**

Diameter	Model
60mm -	12500210
100mm -	12500211



**SINGLE TOOL CLIP LARGE**

Diameter	Model
25mm -	12500255
28mm -	12500256
32mm -	12500257



**DOUBLE TOOL CLIP**

Diameter	Model
6mm -	12500250
10mm -	12500251
13mm -	12500252
16mm -	12500253
19mm -	12500254





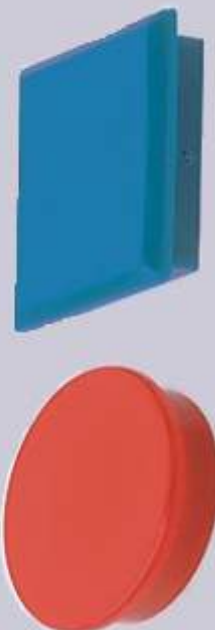
#### SINGLE TOOL CLIP SMALL

Diameter	Model
6mm	- 12500245
10mm	- 12500246
13mm	- 12500247
16mm	- 12500248
19mm	- 12500249



#### MAGNETIC HOLDER

Diameter	Model
40mm	- 12500259



#### MAGNETS - PACKS OF 10

Colour/Shape	Model
Red Round	- 12500268
Blue Round	- 12500267
Red Square	- 12500266
Blue Square	- 12500265



#### CABLE HOLDER 50mmH x 37mmW

Length	Model
150mm	- 12500202
200mm	- 12500203

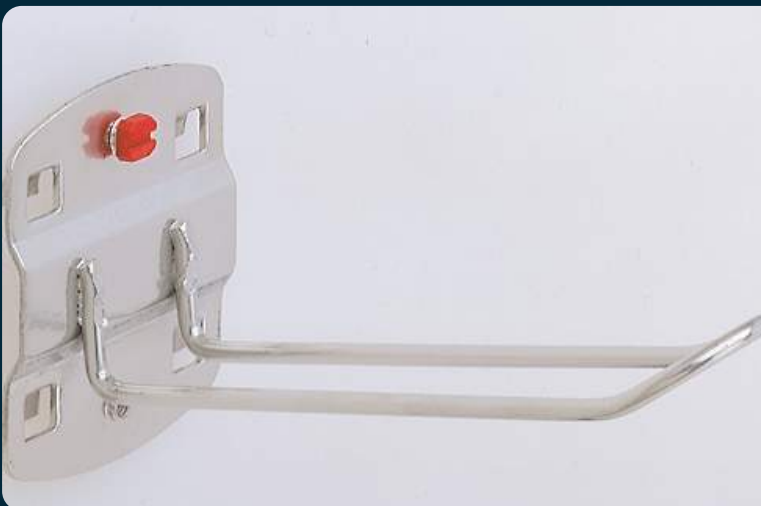


#### HOLDER FOR 3 TOOLS 45mmW

Length	Model
150mm	- 12500201



**HOLDER FOR 6 TOOLS**  
140mmL x 240mmW  
Model - 12500200



**HOLDER FOR SELF SERVE PACKS**  
125mmL x 30mmW  
Model - 12500204



**SAW HOLDER (SUPPLIED IN PAIRS)**  
Holds 4 Saws  
Model - 12500212



#### BRACKET FOR HOLDING SIZE 8 PARTS BINS

Bin Capacity	Length	Model
5	550 mm	12500214
9	990mm	12500215



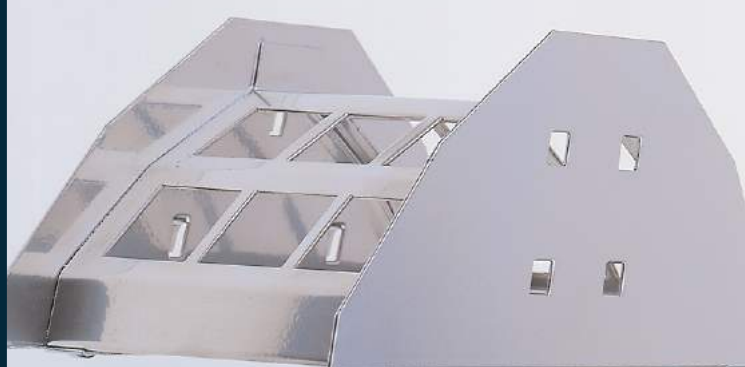
#### BRACKET FOR HOLDING SIZE 7 PARTS BINS

Bin Capacity	Length	Model
5	550 mm	12500216
9	990mm	12500217



#### HORIZONTAL SPANNER HOLDER

Fits 8 Spanners  
Model - 12500223



#### HOSE HOLDER

230mmW x 125mmD  
Model - 12500234





#### VERTICAL SPANNER HOLDER

Holds 10 Spanners  
Model 12500224



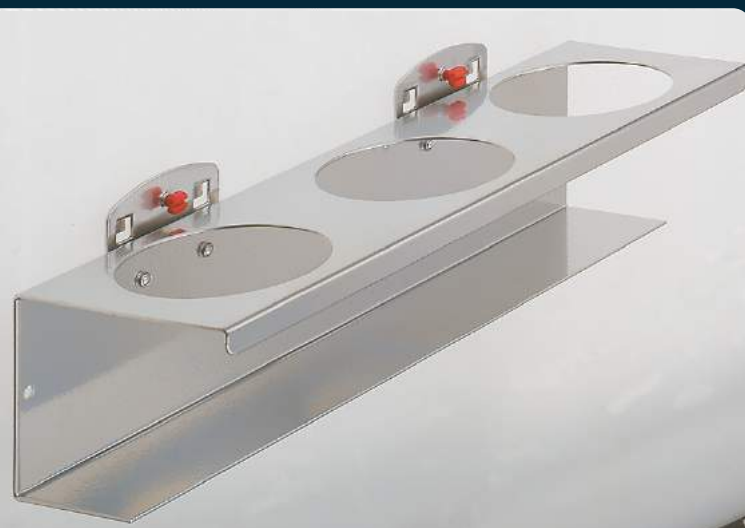
#### PARTS BIN HOLDER

Suits Size 7 & 8 Bins  
Holds 1 Bin  
Model 12500213



#### COMBINATION HOLDER (2 PARTS)

150mmL x 55mmW  
Model 12500218



#### CAN HOLDERS

Capacity	Model
1 Can	12500219
3 Cans	12500220



#### BIT HOLDER FOR 7 BITS

150mmW x 5mmD

Model 12500226



#### DRILL HOLDER

Capacity

14 Items

28 Items

Model

12500231

12500235



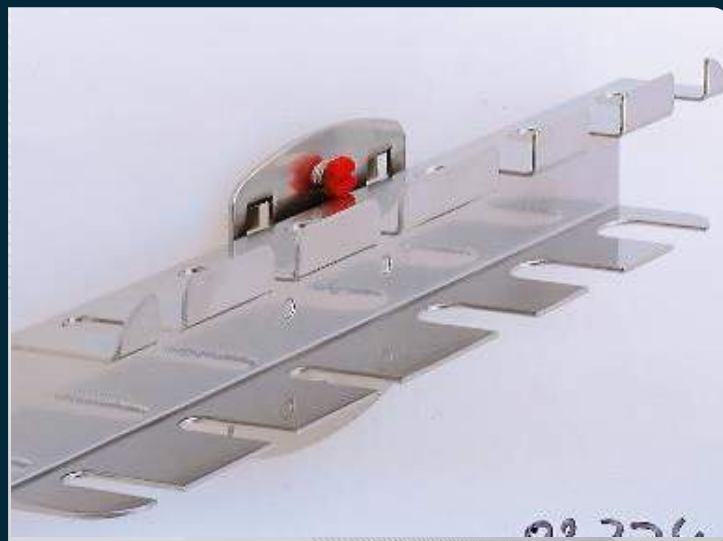
#### SOCKET HOLDER

Capacity

12 Sockets

Model

12500227



#### SCREWDRIVER HOLDER

Capacity

6 Items

12 Items

Model

12500229

12500230





#### ALLEN KEY HOLDER FOR 9 KEYS

Suits Sizes 1-11 200mmW x 70mmH

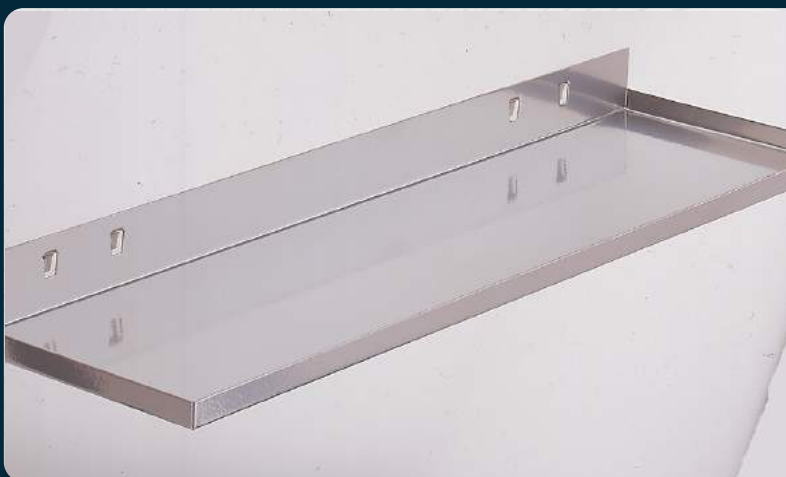
Model 12500227



#### TOOL HOLDERS FOR MK2 & MK3

MK2 12500232

MK3 12500233



#### METAL SHELF

Size

Model

350mmW x 125mmD

12500221

445mmW x 150mmD

12500222



#### TOOL RETAINER FOR SELF-DRILLING

Size

Model

120mmL x 45mmD

12500262

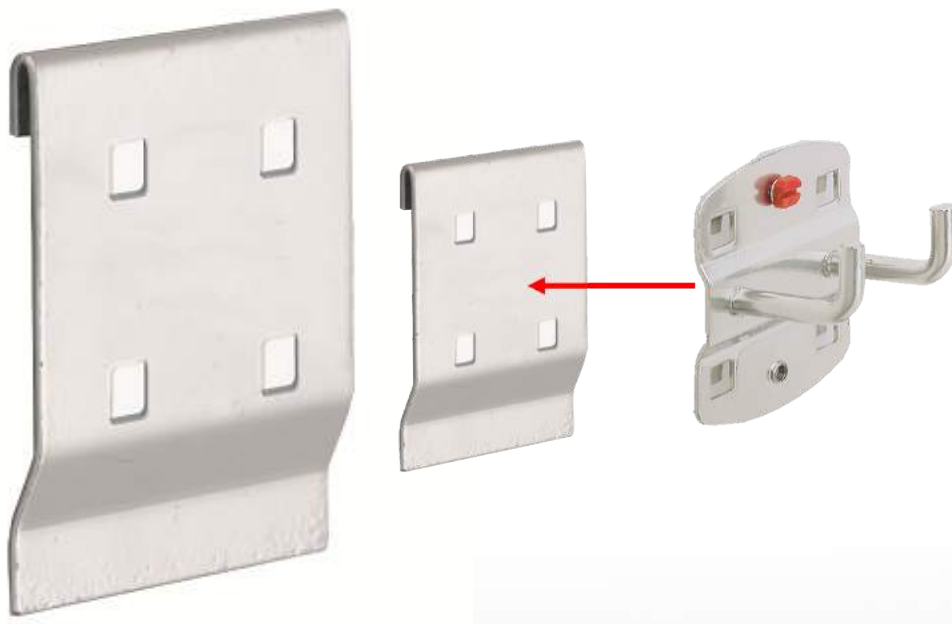
390mmL x 45mmD

12500263



**BASE PLATE FOR LABELLING**

Model 12500352



**ADAPTER TO ADAPT PERFORATED PANEL TOOLS TO SLOTTED LOUVRE PANEL TOOLS**

Model 12500353



**STEEL SHELF - Light Grey**

Size	Model
500mmL x 250mmD	12500348
1000mmL x 250mmD	12500350



**STEEL SHELF - Gentian Blue**

Size	Model
500mmL x 250mmD	12500349
1000mmL x 250mmD	12500351



#### A4 FORM HOLDER

Colour	Model
Gentian Blue	12500356
Light Grey	12500355



#### BROCHURE HOLDERS

A4, Gentian Blue	- 12500360
A4, Light Grey	- 12500359
A3, Gentian Blue	- 12500358
A3, Light Grey	- 12500357



#### UNIVERSAL ROUND HOLDER, 12mm Diameter

Size	Model
200mmL	12500340
300mmL	12500341



#### UNIVERSAL SQUARE HOLDER, 15 X 15mm

Size	Model
200mmL	12500342
300mmL	12500343





**BACKSAFE**  
mining



1300 305 314



#### **PIN SUPPORT**

Sold as a pair - 60mm width x 100mmL  
12500346



#### **CORRUGATED SUPPORTS**

Sold as a pair - 55mm separation between corrugations  
200mmL x 40mmW 12500347



#### **FORK SUPPORT, 40mm Clearance**

Size	Model
200mmL	12500345



#### **TUBE SUPPORT, 20mm Diameter**

Size	Model
200mmL	12500344



1300 305 314 . [solutions@backsafemining.com.au](mailto:solutions@backsafemining.com.au) . [www.backsafemining.com.au](http://www.backsafemining.com.au)



**AUSTRALIA-WIDE | DELIVERY . SERVICE . PARTS . SUPPORT**